

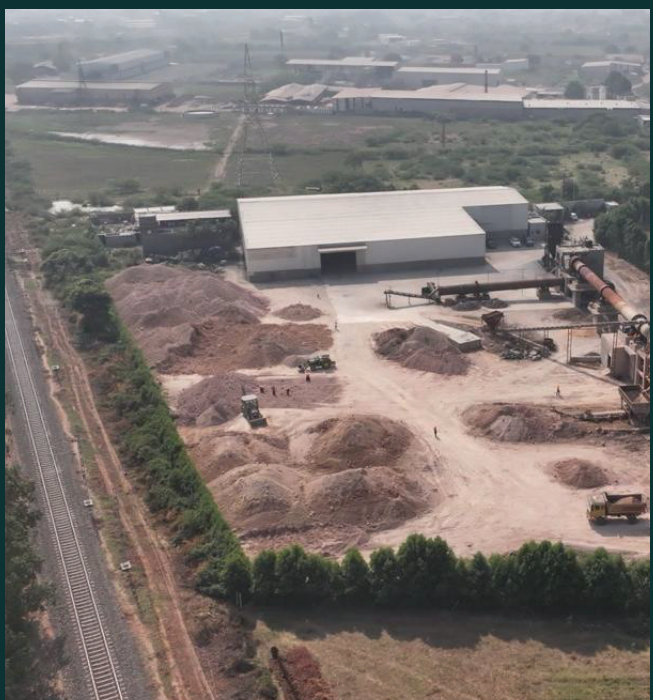
# Minning & Calcination

Excellence in Refractory  
Grade Bauxite



# About company

Leading the way in quality Bauxite Mining & Calcination, **Felix Mining & Calcination LLP** supplies high-purity Bauxite and Calcined Bauxite worldwide. With advanced, sustainable Mining & energy-efficient calcination, we deliver consistent, high-grade materials for steel, chemical, construction, and environmental industries. Backed by precision extraction, proprietary thermal processing, and ISO-certified quality, our minerals are trusted for mission-critical applications globally.







## OUR VISION

To be a global leader in sustainable bauxite Mining & advanced calcined products, delivering consistent industrial value while protecting the environment and supporting long-term growth.

## OUR MISSION

- Operate with excellence, efficiency, & safety across Mining, processing, & calcination.
- Supply high-quality bauxite & calcined products for domestic & global markets.
- Use advanced technology & best Mining practices to boost productivity & reduce environmental impact.
- Build strong partnerships through reliable delivery & customer-focused service.
- Promote responsible resource management, community development, & sustainable practices.

*Precision Mining.  
Pure Performance...*

# 02.

## OUR CORE TEAMMATES

*Teamwork is the combined effort of individuals working together to achieve a common goal with unity and collaboration.*



**KAUSHAL  
DOSHI**

**DIRECTOR**  
( SALES )

**GAUTAM  
PATEL**

**DIRECTOR**  
( PURCHASE & FINANCE )

**MOHAMMADKASANI  
M. SAIYED**

**DIRECTOR**  
( PRODUCTIONS )

**VISHAL  
PARMAR**

( DISPATCH, INVENTORY MANAGEMENT,  
QUALITY CONTROL, ADMINISTRATION &  
RECORD KEEPING )

**MAQBUL  
KHORAJIYA**

( RAW MATERIAL, PRODUCTION,  
KILN MANAGEMENT, ETC )

## 2018

***Felix Minning & Calcination LLP** was established, starting its journey through the trading of bauxite and allied minerals, steadily building a reliable market presence and customer base.*

## 2020-2021

*The company reached a major milestone by setting up its own state-of-the-art calcination and manufacturing unit, marking a strategic shift from trading to in-house production and enabling consistent quality, enhanced customization, and improved supply reliability.*

## 2021 - 2024

***Felix Minning & Calcination LLP** experienced strong growth supported by technological upgrades, process excellence, & a commitment to customer satisfaction, further expanding its operational capabilities and market reach.*

## 2024 - till now

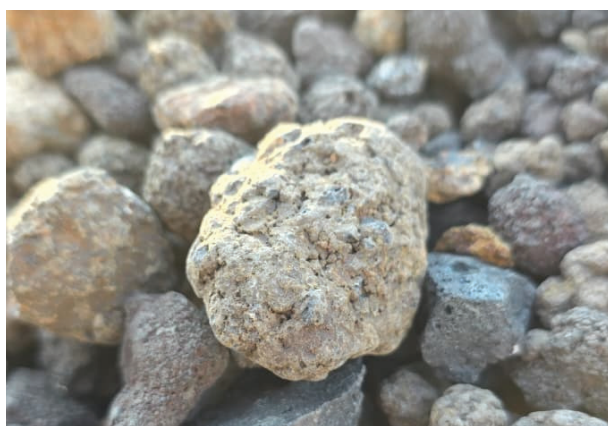
*The company stands as one of India's leading calcination units, recognized for quality, efficiency, and innovation, and is poised for continued growth and leadership in the mineral processing industry.*

# 03. COMPANY TIMELINE



# 04.

## OUR CORE STRENGTH



### HIGH-QUALITY MINERALS RESERVES

Access to rich, consistent, and strategically located bauxite deposits ensuring a reliable long-term supply.

### ADVANCED CALCINATION FACILITIES

State-of-the-art rotary kilns & controlled production systems delivering uniform, high performance calcined bauxite.



### STRONG TECHNICAL EXPERTISE

Experienced Mining, processing, & quality-control teams ensuring precision, efficiency, & optimized output.



## CONSISTENT PRODUCT QUALITY

Batch-wise testing, strict process control, & standardized quality protocols guarantee stable chemical and physical properties.

## EFFICIENT LOGISTICS & SUPPLY CHAIN

Well-coordinated transportation, bulk handling, & on-time delivery supporting national & international customers.



## CUSTOMER - CENTRIC CUSTOMIZATION

Ability to tailor grades, particle sizes, & packaging as per industry specific requirements.

## ENVIRONMENTAL & SAFETY COMMITMENT

Adherence to sustainable Mining practices, dust control, waste management, & high safety standards across operations.



# 05.

## PRODUCT DETAILS

### CALCINE BAUXITE

#### Available Sizes :

0-1, 1-3, 3-5, 5-8, 5-10, 16-30, 30-60, 140mesh, 200 mesh, 300 mesh, 325 mesh



Al <sub>2</sub> O <sub>3</sub> (%)	Fe <sub>2</sub> O <sub>3</sub> (%)	TiO <sub>2</sub> (%)	CaO (%)	B.D (Gm/cc)
87.00	1.80	4.00	0.50	3.25
82.00	3.50	5.00	2.00	3.10
83.00	3.00	4.00	2.00	3.15
85.00	3.20	4.50	2.50	3.20
80.00	4.00	4.00	2.80	3.05
74.00	8.00	6.00	2.00	2.85
76.00	1.80	4.00	0.65	2.90
75.00	4.50	5.00	2.00	2.80
86.00	2.00	4.00	0.40	3.15
88.00	1.60	4.00	0.60	3.25
85.00	2.80	4.00	1.50	3.10
85.00	2.50	3.50	1.80	3.15
78.00	3.50	5.00	2.50	2.95
74.00	5.00	5.00	2.50	2.80
77.00	5.00	6.00	3.00	2.85
90.00	1.30	3.00	0.25	3.30



# 06. MINNING

---



*Only Single Mine Owner in India*

Address : Village - Faradi, Taluka - Mandvi, Dist - Bhuj, Kutch

Area : 10 Hecter

Capacity : 1acre – 175000 Ton

Grade : Raw Bauxite at various layers

a. 3 – 5 Ft. : Over burden.

b. 8 – 10 Ft. : Ultra low  $\text{Fe}_2\text{O}_3$ .

c. 7 Ft. layer : 86% - 87%  $\text{Al}_2\text{O}_3$ .

d. 7 – 8 Ft. layer : 84% - 86%  $\text{Al}_2\text{O}_3$ .

e. 7 and below : 80% - 84%  $\text{Al}_2\text{O}_3$ .

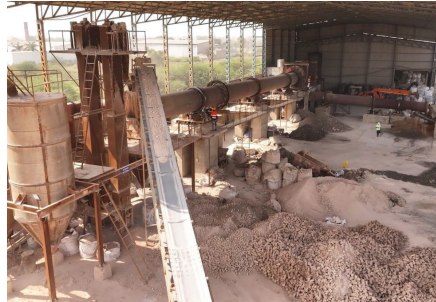
# 07.

## CALCINATION



### UNIT - 1

PRODUCTION  
CAPACITY  
80 TPH



### UNIT - 2

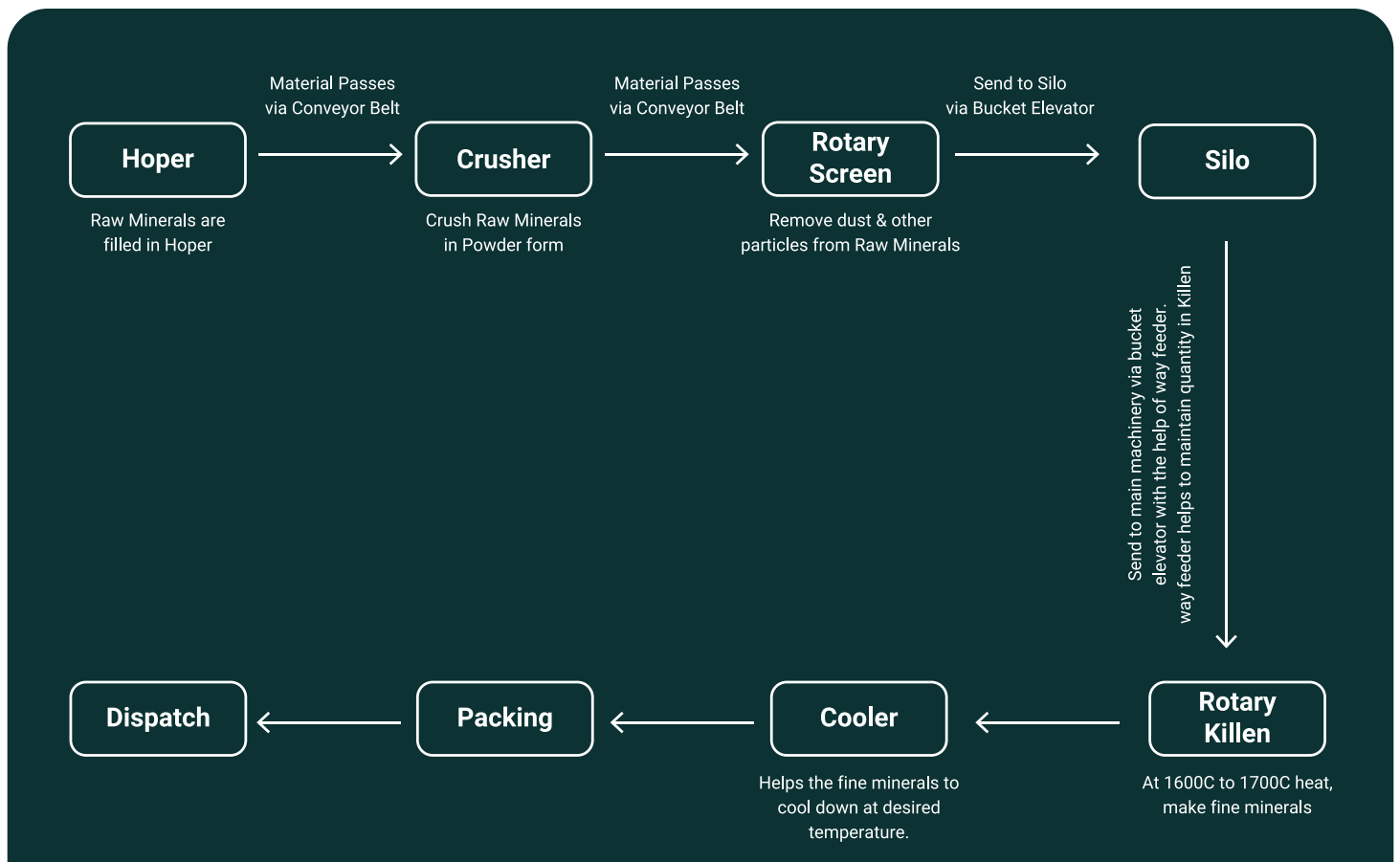
PRODUCTION  
CAPACITY  
50 TPH



### UNIT - 3

PRODUCTION  
CAPACITY  
110 TPH

## PROCESS



# 08.

## GRINDING



We take pride in delivering high-quality calcined bauxite processed with precision & consistency. Our state of the art in-house grinding unit enables us to offer customized sizes to meet the exact requirements of diverse industries.

## DISPATCH

We ensure safe, efficient, and timely dispatch of all materials to meet our customers' requirements.

Our products are available in two standard packaging options:

- 50 kg Bags – Ideal for moderate quantity requirements, easy to handle & suitable for small to medium-scale operations.
- 1000 kg Jumbo Bags – Designed for bulk orders, ensuring reduced handling time & improved logistics efficiency.

Every bag is packed with care to maintain product quality during storage & transportation. We prioritize reliable delivery & consistent supply for all our customers.





## Laboratories



*This is the only Mining company in the area which has got an operating and active chemical testing laboratory, located inside our calcination plant. The laboratory is well equipped & staffed to undertake conventional wet chemical analysis as well as for rapid instrumental determinations of various elements in raw bauxite and calcination.*

## Our Gallery



## Get In Touch

**: Contact No :**

+91 74900 78000

+91 98982 04603

**: Email :**

[felixcalcine@gmail.com](mailto:felixcalcine@gmail.com)

**: Factory Address :**

R.S. NO. 128 P1, B/h Future Refractories,  
Nr. National Highway, Village: Panchasar,  
Taluka: Wankaner, Dist: Morbi -363621.

**: Reg. Address :**

604, Corporate Levels,  
Ayodhya Chowk, 150 ft. Ring Road,  
Rajkot - 360005.